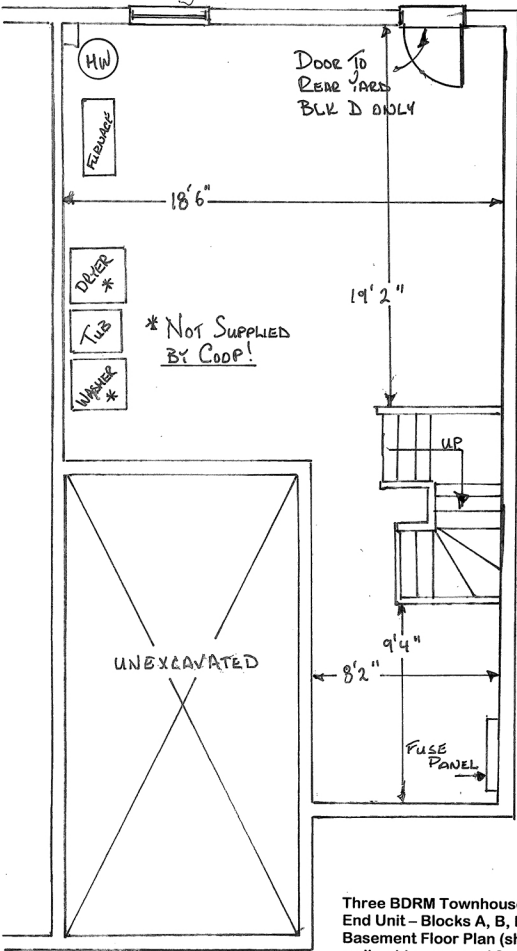


**Three BDRM Townhouse Unit (1133sqft)  
 End Unit - Blocks A, B, D, F, G, I, J, & L  
 Second Floor Plan**

REAR YARD



Three BDRM Townhouse Unit (1133sqft)  
End Unit - Blocks A, B, D, F, G, I, J, & L  
Basement Floor Plan (showing Block D  
walkout to rear yard from basement)